

## Snapshot Overview

- Combining UK domain expertise with the commercial benefits of near shore resource utilisation.

**23+**

Years'  
Experience

**1500+**

Professional  
Staff

**10**

Offices in Africa, Europe,  
the UK and USA

**250+**

Satisfied  
Clients

## Staff compliment

- 70+ Mobile Engineers
- 60+ Microsoft Engineers
- 50+ Java Engineers
- 20+ Front-End Engineers
- 40+ UX/UI Designers
- 40+ BI Engineers
- 10+ RPA developers
- 45+ Project Managers
- 65+ Business Analysts
- 60+ Learners

We have the capability to construct high performing agile teams in a relatively short period of time because of the large consultant pool available within the company.

# OUR EXPERTISE

## SOFTWARE DEVELOPMENT SOLUTIONS



Custom Software Development  
(Web, Mobile, back-end)



Cloud Solutions



UX/UI Design Solutions

## DATA & AUTOMATION SOLUTIONS



BI & Data Analytics



AI,  
Data Science



Intelligent Automation  
Incl. RPA Solutions

## BUSINESS ENABLEMENT SOLUTIONS



Delivery Management  
(Project Management,  
Scrum Masters, Change  
Management)



Consulting Services &  
Business Analysis



Rapid Deployment  
Staff Augmentation

# ACCELERATE YOUR DIGITAL JOURNEY: WHERE ARE YOU AT AND WHERE DO YOU WANT TO BE?

## STARTER



*"I know we need to be more digital but not sure how"*

Typical engagement would be initiated by a digital health check to identify the most beneficial areas for focus/action.

## EMERGING



*"We know what we want and need someone to do it"*

Focus on provision of an Agile project team to achieve a specific goal at a specific price point. Agree project plan.

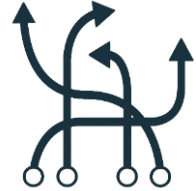
## CONNECTED



*"We are implementing our plan but can't get all the resource we need"*

Source and provide relevant staff augmentation options for a specific term.

## DISRUPTING

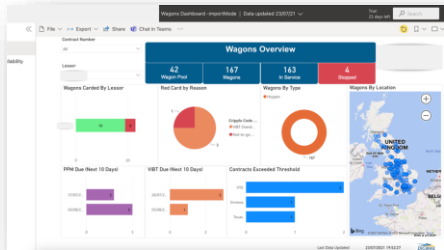


*"Innovation driven partner collaborated innovation"*

Working with partners to produce cross company solutions to industry problems.

# EXAMPLES OF TYPICAL ENGAGEMENT IN RAIL

## Wagon maintenance and location application



- Accelerating informed decision making and improving how you deliver value to your customers
- Rapid deployment of experienced software teams to the rail industry
- A proven ability to focus on the areas of greatest value, deploy and deliver successful, highly adopted projects
- Improving organisational efficiencies, delivering great benefits while retaining knowledgeable teams, allowing them to work smarter not harder.

## Loco fleet availability application



## Staff and rolling stock planning and pricing application

Week	Order	Status	Route	LOD	Worksite	Start Yard
23						
25	PT000016	Cancelled			Teving	
25	PT000016	Not processing			1037	
25	PT000015	Order-loaded			101	
25	PT000017	Order-loaded			1037	